

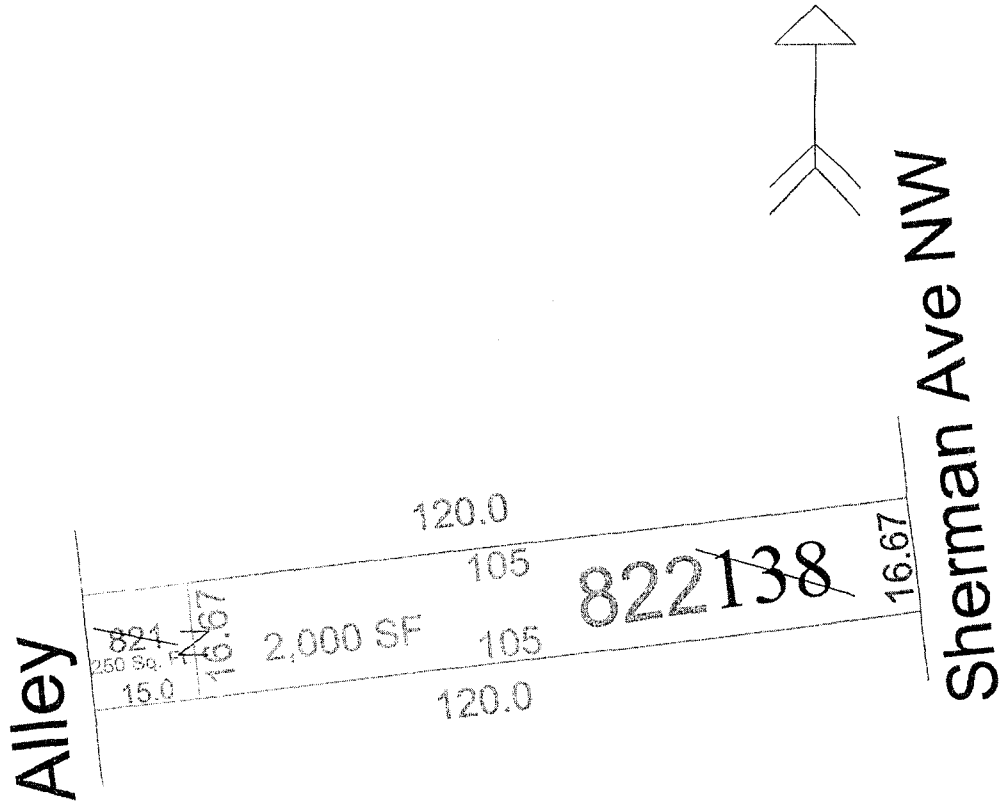
OFFICE OF TAX AND REVENUE
ASSESSMENT DIVISION

3827-K



ASSESSMENT AND TAXATION PLAT

SQUARE 2857



Andrea Haner Combination 12/16/06
 Draftsman Reference Date

Scale, 1 inch 6 ft.

The Office of Surveyor of the District of Columbia shall admit this plat to record under the provisions of Chapter 7 of Title 47, District of Columbia Code, Designation of Real Property for Assessment and Taxation, and for other purposes.

Homer W. Branke
 Chief Assessor, Office of Tax and Revenue

Board of Zoning Adjustment
 District of Columbia
 CASE NO. 19127
 EXHIBIT NO. 39H